

# Jazz Arranging: Instrument Ranges / Transposition Quiz

1 page of 1

/30 = /100 =

Name: \_\_\_\_\_

[worth 15% of final grade]

① What interval is used to transpose the following instruments from concert pitch to their transposed, written parts? Indicate if the transposition is up or down from the concert pitch with an arrow (↑, ↓).  
Example: ↑ Maj 3rd.

a) trumpet: \_\_\_\_\_ b) bari sax: \_\_\_\_\_ c) tenor sax: \_\_\_\_\_  
d) trombone: \_\_\_\_\_ e) alto sax: \_\_\_\_\_ f) bass trombone: \_\_\_\_\_  
g) soprano sax: \_\_\_\_\_ h) flugelhorn: \_\_\_\_\_

② What clef would be used to correctly write a transposed part for bari sax? Circle the correct answer.

a) tenor clef    b) treble clef    c) bass clef

③ The acoustic, string bass sounds: [MULTIPLE CHOICE]

a) the same as written  
b) an octave higher than written  
c) an octave lower than written  
d) a major 6th below what appears on its part.

④ Name the instrument which corresponds with the following concert ranges:

a)

b)

c)

d)

e)

/8

/1

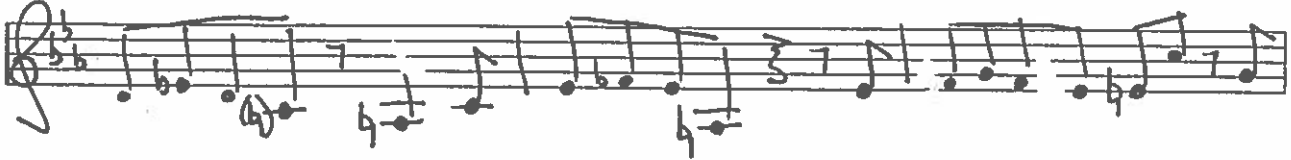
/1

/5

# Jazz Arranging Transposition Quiz, continued...

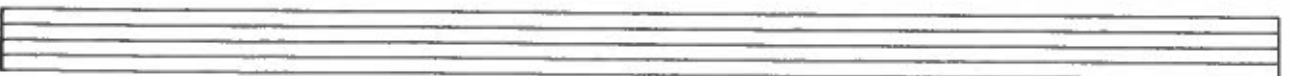
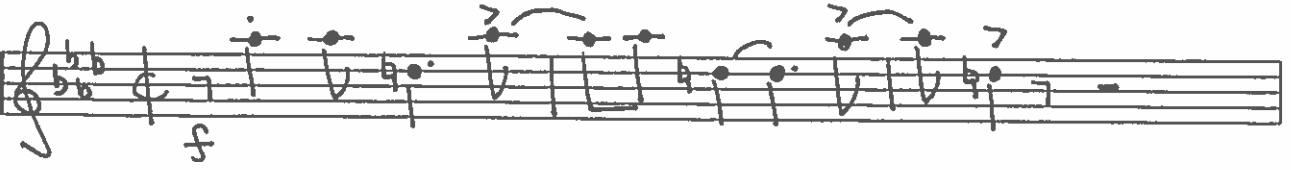
Name: \_\_\_\_\_

5) The following melody is the alto sax part from Gerry Mulligan's composition, "Jew", presented in concert pitch. Transpose it for alto sax. Use a key signature.



1/5

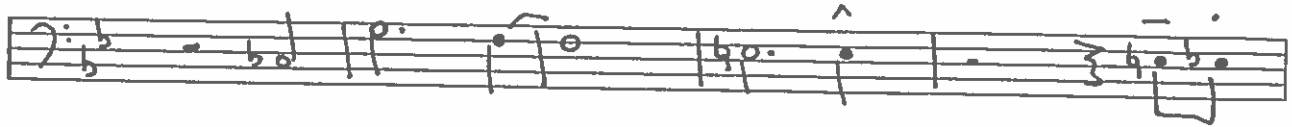
6) Transpose the following concert pitch melody for trumpet. Use a key signature.



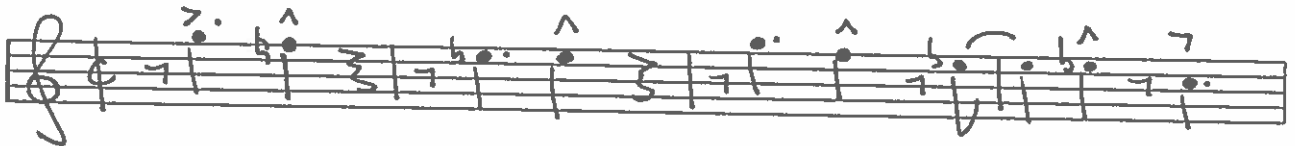
1/3

name: \_\_\_\_\_

c) Transpose the following concert pitch melody for bar sax.  
Use a key signature.



d) The following melody is a transposed tenor sax part. Write it in concert pitch. Use a key signature.



e) The "written range" (transposed) for all saxophones is:  
(write the lowest and highest notes with an arrow in between)

