

# Jazz Arranging: Transposition / Instrument Ranges Quiz

3.0  
95.1

Total:  $1/35 = \underline{\quad} \% =$

name: \_\_\_\_\_

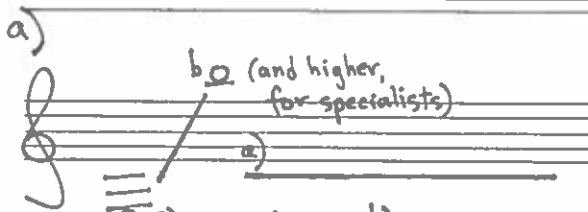
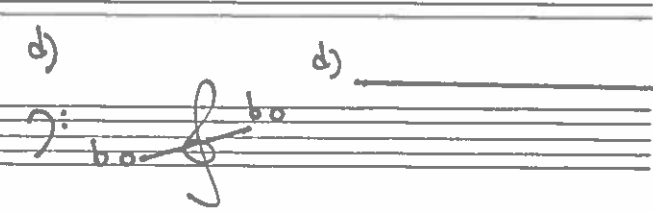
date: \_\_\_\_\_

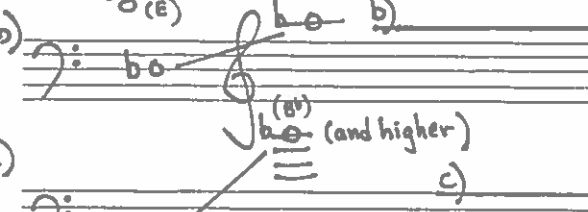
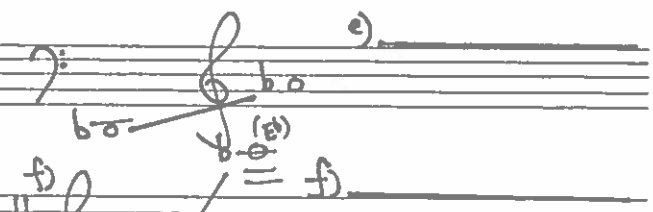
① Beside each instrument, give the interval used to transpose from concert pitch to their written/transposed parts. Indicate if the transposition is up or down from the concert pitch with an arrow.  
ex:  $\uparrow P4$  or  $\downarrow Maj. 6th$



- a) tenor trombone: \_\_\_\_\_ d) alto sax: \_\_\_\_\_ g) soprano sax: \_\_\_\_\_  
 b) trumpet: \_\_\_\_\_ e) tenor sax: \_\_\_\_\_  
 c) bass trombone: \_\_\_\_\_ f) bari sax: \_\_\_\_\_

② As an arranger, when might you choose to use a flugelhorn instead of a trumpet? /7

③ Identify the instrument which corresponds with the given concert ranges: /2

a)  d) 

b)  e) 

c)  f) 

Page total: /15

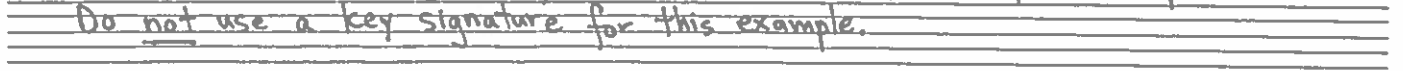
Name: \_\_\_\_\_

④ The written range for all saxophones is:



⑤ Transpose the following melody, written in concert pitch, for trumpet:

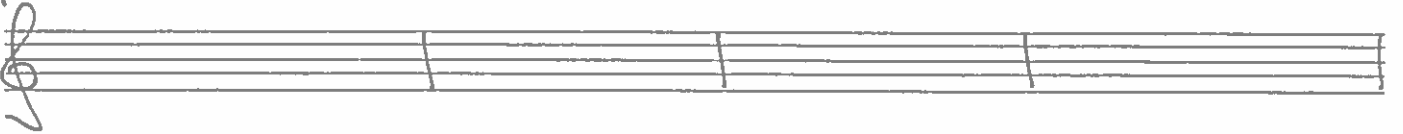
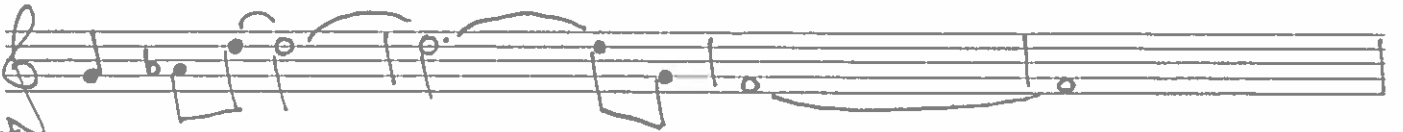
Do not use a key signature for this example.



Concert:

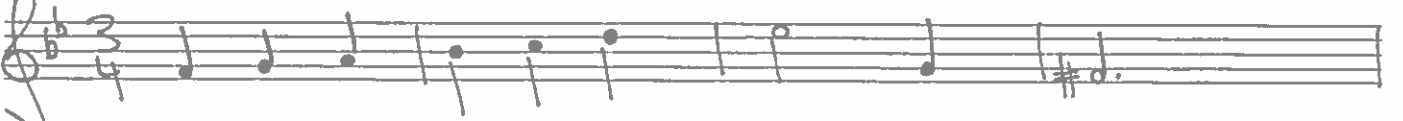


for trpt:

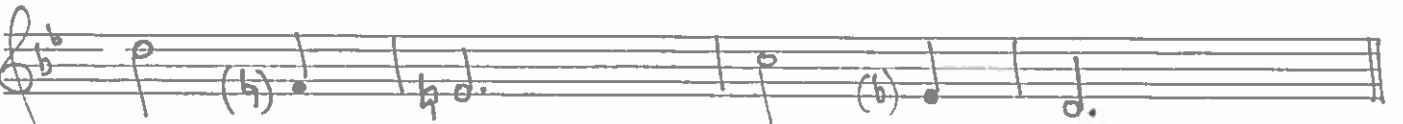


⑥ The following tune (Bluesette, by Toots Thielemans) is written in the (concert pitch) key of Bb Major. Transpose it for alto sax. Use a key signature.

Concert:



for alto sax:



Page total:

/10



Name: \_\_\_\_\_

7 The following melody is a transposed Tenor Sax part from Thad Jones' "Don't Get Sassy." Put it back into concert pitch. You may change clefs mid-way if you think it is appropriate.

8 Transpose "Happy Birthday" from concert pitch into a bari sax part:

page total: 10